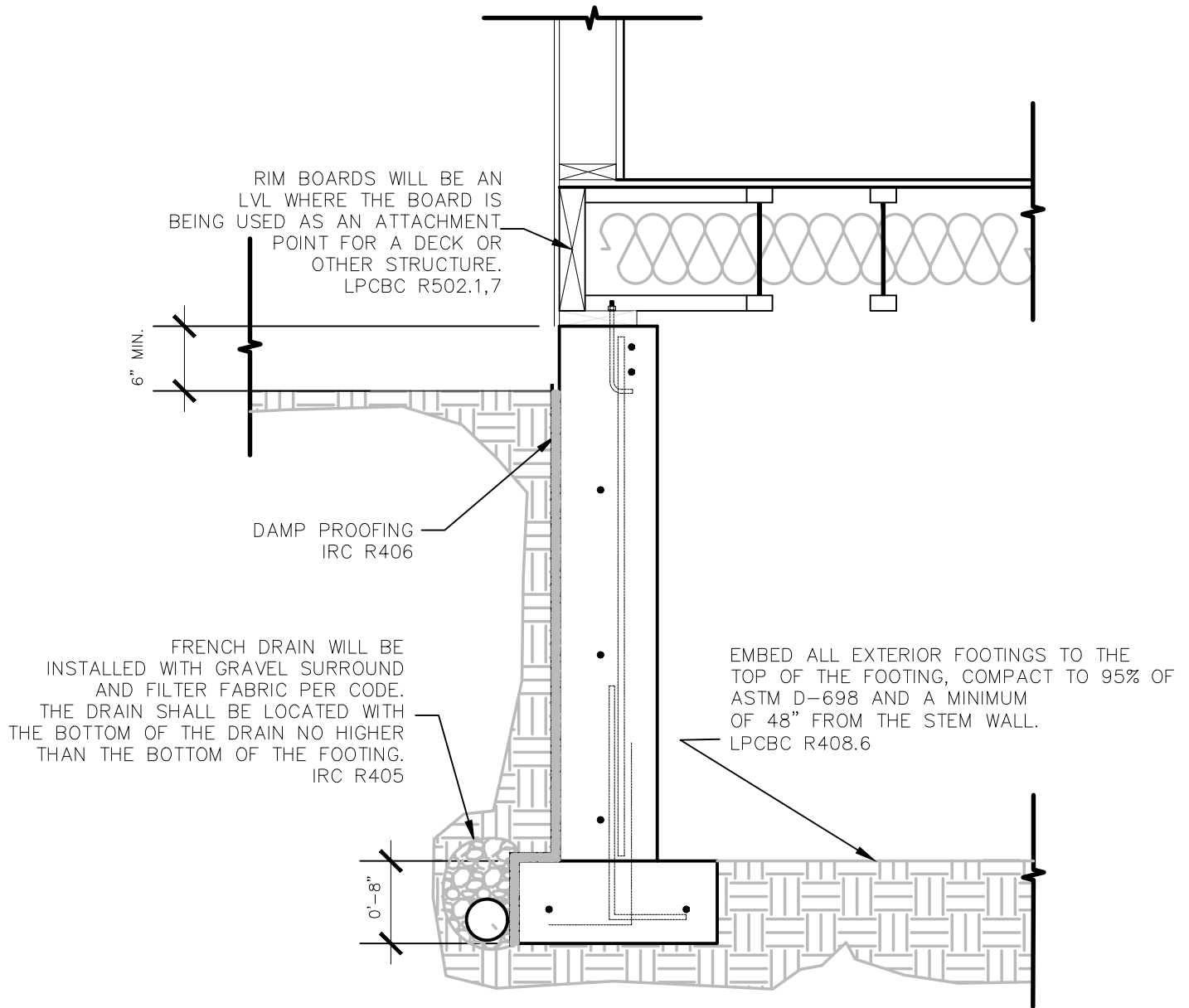


NEW INSPECTION ITEMS.

AS PART OF THE NEW BUILDING CODE IMPLEMENTATION THE ITEMS BELOW WILL BE REVIEWED AS PART OF OUR INSPECTION PROCESS. AN INSPECTION COULD BE REQUIRED WHEN THE INSTALLATION OF THE FRENCH DRAIN AND THE INTERIOR BACK FILL IS COMPLETE AND BEFORE THE FLOOR DECK IS INSTALLED AT THE INSPECTOR'S DISCRETION. THE RIM BOARD INSPECTION WILL BE PART OF THE FRAMING INSPECTION.



Notes:

- CONC. STRENGTH = 3000 PSI @ 28 days
- REINFORCEMENT = GR 40 (fy=40,000 psi) MIN.
- ALL CONC. SHALL BE CONSOLIDATED BY MECH. VIBRATION.
- MINIMUM REINFORCEMENT LAP LENGTH = 24"
- **COMPACT ALL BACKFILL TO 95% OF ASTM D-698**
- ALL FDNS SHALL BEAR ON DENSE UNDISTURBED NATIVE SOIL.
- REINFORCEMENT SHALL BE CONTINUOUS AROUND ALL CORNERS.

LA PLATA COUNTY BUILDING DEPARTMENT FOUNDATION DETAILS

MINIMUM REQUIREMENTS
ONE & TWO STORY RESIDENTIAL